

DOTTORATO DI RICERCA IN DESIGN
POLITECNICO DI MILANO, DIPARTIMENTO DI DESIGN



POLITECNICO
MILANO 1863

3rd-year kit
XXX cycle

__ steps (see table in the next page)

1. Indication of 2 External Examiners

The Ph.D. candidate, together with his/her Supervisor, is required to indicate 2 External Examiners.

The Examiner has to be a highly qualified professor, also belonging to foreign institutions, and external to the Politecnico di Milano.

The Examiners' role is to provide an in-depth evaluation of the thesis.

2. Plagiarism check of the thesis

Before the delivery of the final thesis, the Ph.D. candidate, together with his/her Supervisor, is required to submit the thesis into a plagiarism check service ("Turnitin") provided by the Ph.D. School.

3. Thesis delivery

The Ph.D. candidate is required to send a version of the thesis as close as possible to the final one to the secretariat.

4. Assessment

Final assessment of the Ph.D. thesis through a presentation to a commission composed by members of the Ph.D. Board for the admission to the final exam.

5. External Examiners evaluation

If the final assessment is positive, the **thesis** and a **dossier** listing the candidate's activities, titles (participation to conferences, as both attendee and speaker, or research projects, seminars, workshops, etc.) and his/her scientific publications, are submitted to the 2 External Examiners selected.

The Examiners will provide their evaluation through a form, indicating:

- a. general and detailed comments
- b. scientific soundness and significance
- c. quality of the written document (quality of the abstract and of the properly supported discussion and conclusions, thesis structure, adequacy of the references, clarity)

↳ The Examiners will also suggest an overall assessment and a possible outcome of the evaluation to the Board, among the following choices:

- ★ PhD thesis not ready to be defended
 - suggesting the level of revisions required among*
 - . minor revisions (up to 1 month)*
 - . major revisions (up to 3 months)*
 - . substantial revisions (up to 6 months)*
- ★ PhD awardable
- ★ PhD awardable cum laude

6. Send the final version to the Examiner

The Ph.D. candidate is required to send the final version of the thesis (improved on the basis of the evaluation comments) to the Examiners by the time required.

If asked for substantial revisions (6 months), the Ph.D. candidate is admitted to the final exam and the thesis will be supported by a 2nd evaluation by the Examiners.

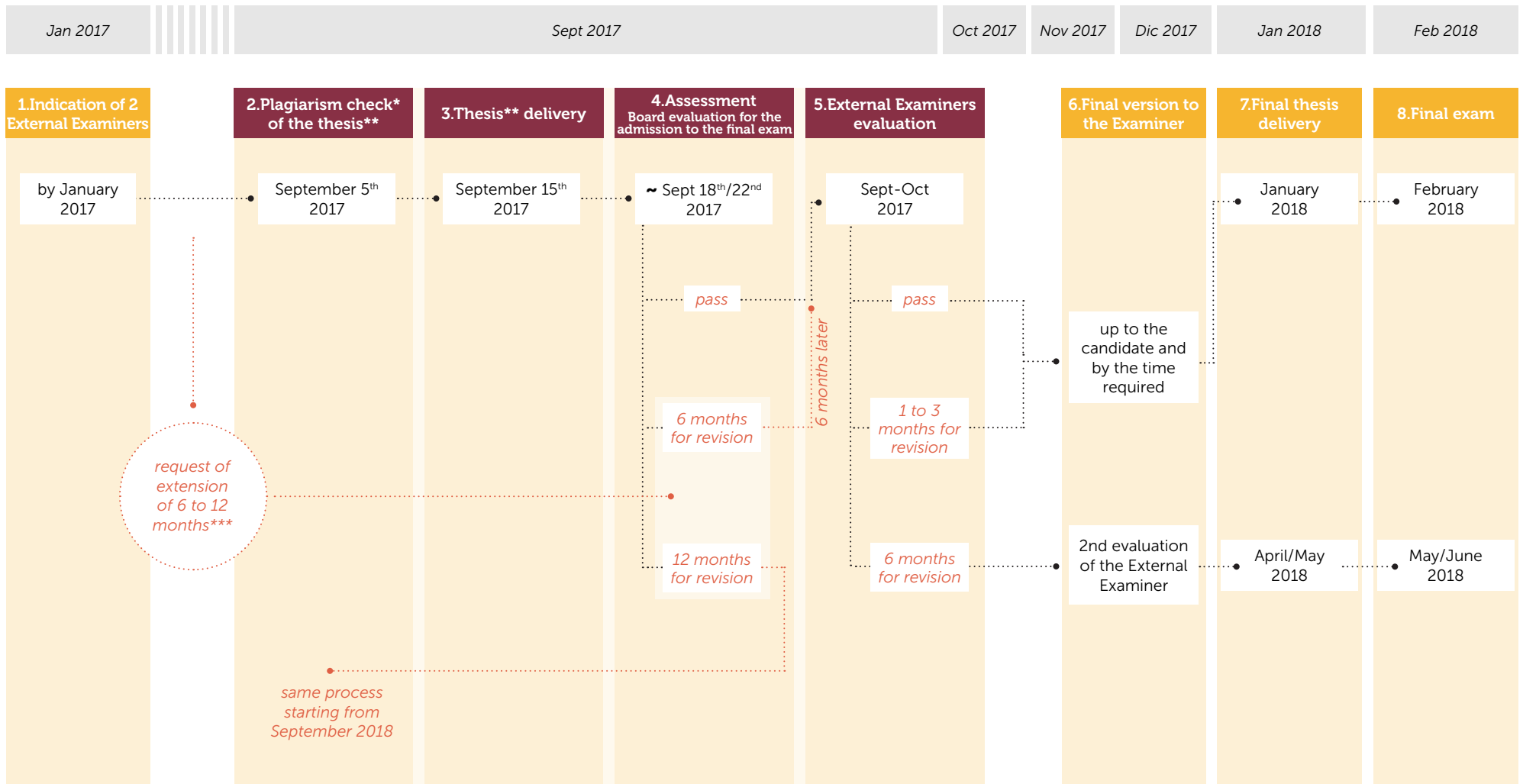
7. Final thesis delivery

The Ph.D. candidate is required to send the final version of the thesis to the secretariat.

8. Final exam

The presentation lasts 30 minutes + 15/30 minutes of Q&A session.

The commission is composed as described in the "University regulations for doctoral programmes", art. 11, comma 5 (www.dottorato.polimi.it > PhD Homepage > Useful information > Download Area)



* Through the Turnitin Software provided by the Ph.D. School

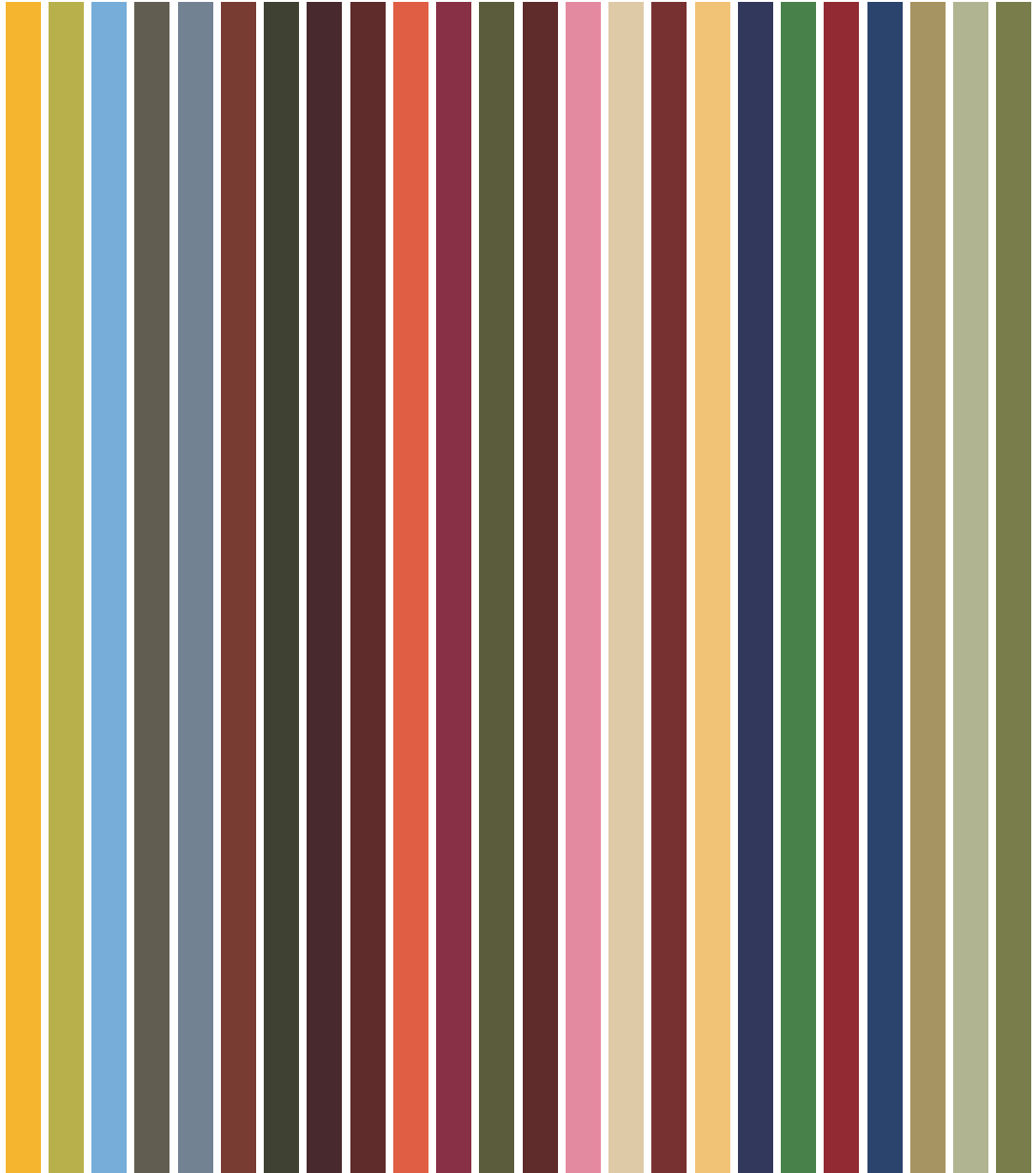
** Version of the thesis as close as possible to the final one

*** After the final year, candidates who have achieved sufficient results but need more time to draw up their thesis, may obtain an extension of up to 12 months

.....
.....
.....
.....
.....
.....
.....
.....
.....
.....
.....
.....
.....
.....
.....
.....
.....
.....
.....
.....
.....
.....
.....
.....
.....
.....
.....
.....
.....
.....
.....
.....
.....
.....
.....
.....
.....
.....
.....
.....
.....
.....
.....
.....
.....
.....
.....
.....



.....
.....
.....
.....
.....
.....
.....
.....
.....
.....
.....
.....
.....
.....
.....
.....
.....
.....
.....
.....
.....
.....
.....
.....
.....
.....
.....
.....
.....
.....
.....
.....
.....
.....
.....
.....
.....
.....
.....
.....
.....
.....
.....
.....
.....
.....
.....
.....
.....
.....
.....
.....
.....
.....



DOTTORATO DI RICERCA IN DESIGN
POLITECNICO DI MILANO, DIPARTIMENTO DI DESIGN



POLITECNICO
MILANO 1863

3rd-year kit
XXX cycle